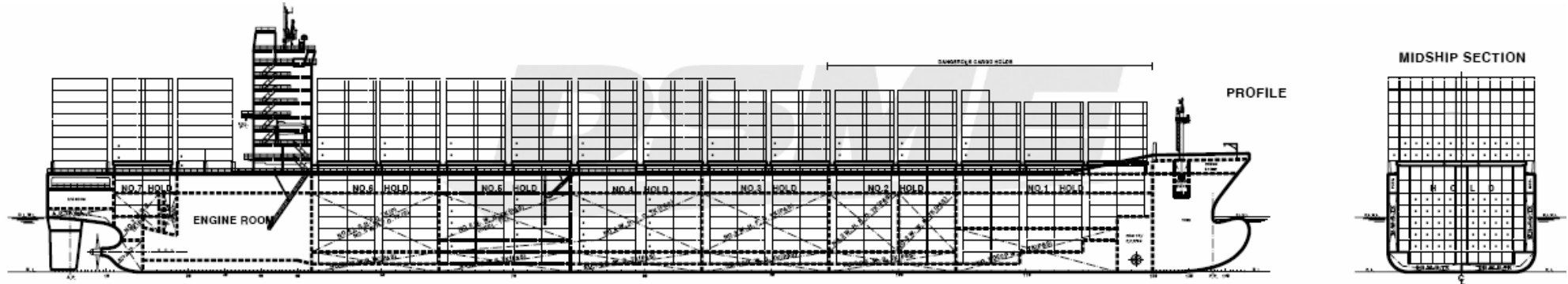


Hamburg-Süd / B. Schulte 4,600 TEU CONTAINERSHIP



Daewoo Shipbuilding & Marine Engineering Co., Ltd.



MAIN PARTICULARS

LOA appr. 264.0 M LBP 251.0 M
 Bmld 32.2 M Dmld 21.5 M
 Td 12.0 M Ts 13.5 M
 DWT at Td/Ts 47,450 / 58,350 metric tons
 Service speed at scantling draft 22.5 knots
 (85% MCR, 15% sea margin)
 Cruising Range appr. 18,600 N.miles
 (Including DFOC of D/G for reefer containers)

Class GL, +100A5, "Container Ship", +MC, AUT, IW,
 BWM-F, "SOLAS II-2, Reg.19".
 Flag Liberia Complement 30 persons

MAIN ENGINE

MAN B&W 8K90MC-C6 x 1 set
 MCR 36,560 kW x 104.0 rpm
 NCR 31,080 kW x 98.5 rpm
 DFOC appr. 124.9 metric tons/day

TANK CAPACITY

HFO with LSHFO tanks appr. 6,300 m3
 MDO tanks appr. 200 m3
 FW tanks appr. 250 m3
 WB tanks appr. 13,800 m3

CONTAINER CAPACITY

On Deck appr. 2,672 TEU
 In Hold appr. 1,928 TEU
 Total appr. 4,600 TEU
 Homo. 14 metric tons/TEU at Ts appr. 2,930 TEU
 Electric sockets for Reefer Containers
 516 FEU (332 FEU on deck / 184 FEU in hold)

HULL STRUCTURE

Steel material : Mild steel, higher-tensile steel
 Mainly for all longitudinal members
 Partly for the transverse members

PAINTING

WB tanks : Tar free epoxy
 Cargo hold : Epoxy primer, Epoxy finish
 Side shell : Tin free self-polishing anti-fouling

CARGO HATCH COVER

Pontoon type with flexible bearing pad
 (total 14 hatches)
 Stack load : 90 MT for 20ft and 120MT for 40ft/45ft

CONTAINER SECURING

In hold : Cell guide for 40ft(2x20ft)
 up to 8 tiers from tank top)
 On deck/hatch : Rod lashing with manual locking
 cover type and/or semi-automatic
 twistlock

DECK MACHINERY

Bow thruster : One(1) x 1,500 KW, EL. CPP type
 Steering gear : One(1) x El. Hyd. 2 ram-4 cyl. type
 Windlass/mooring winch
 : Six(6) x El. type
 Provision crane : One(1) x 10 tons(SWL), Monorail

BALLAST SYSTEM

Ballast & Bilge pump : Two(2) x 550 m3/h x 30 mTH

STEAM GENERATION

Composite type, one(1) set
 OFS : 4,000 kg/h x 7 bar g.
 EGS : 3,000 kg/h x 7 bar g.

POWER GENERATOR

Diesel generator : Four(4) x 2,250 kW, AC450V, 60Hz
 Em'cy generator : One(1) x 300 kW, AC450V, 60Hz