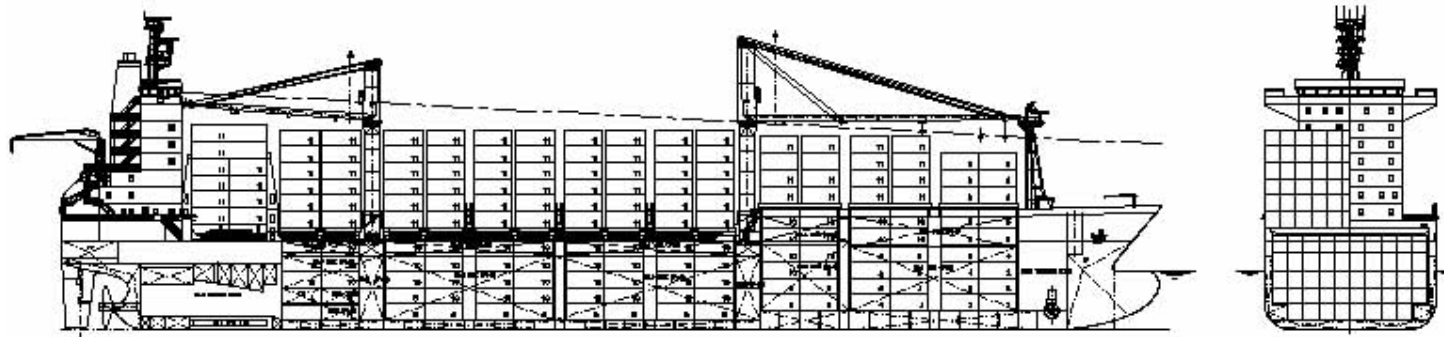


## 1700TEU CONTAINER VESSEL



<b>Main Particulars</b>		<b>Main Engine</b>	MAN B&W 7S60MC-C	<b>Navigational Equipment:</b>
LOA	abt. 175.00 m	MCR	15785 kW x 105 r/min	Radar X-Band, ARPA, TM
Breadth, mld	27.40 m	CSR	14260.5 kW x 102 r/min	Radar S-Band, TM
Depth, mld	14.30 m			Autopilot
Draft (Design/Scantling)	9.50/10.9 m	<b>Generators</b>	1180 kW x 720 r/min x 3sets	Gyro compass/magnetic compass
DWT (at scantling draught)	23400 tons	<b>Emergency generator</b>	170 kW x 1800 r/min x 1set	Echo Sounder
Gross Tonnage	abt. 18334			Weather facsimile
Speed (at design draft)	abt. 20,5kn at 90% MCR	<b>Tank Capacity</b>		Speed log
		Heavy fuel oil	abt. 1803 m <sup>3</sup>	2 x GPS
		Diesel oil	abt. 221 m <sup>3</sup>	
<b>Class</b>	GL + 100 A 5 E IW CONTAINER SHIP , SOLAS II-2, Reg. 54, + MC E AUT NAV-0	Fresh & portable water	abt. 200 m <sup>3</sup>	<b>AIS, VDR</b>
<b>Flag</b>	Isle of Man	Ballast water	abt. 7784 m <sup>3</sup>	<b>Radio Equipment:</b>
<b>Container Capacity (incl. domes)</b>		<b>F.O. consumption of M/E</b>	abt. 60 t/d	GMDSS equipment covering Area A1, A2, A3
<b>In holds</b>	abt. 700TEU (196TEU of 9'6" + 504TEU of 8'6")	<b>Endurance</b>	abt. 15000 nm (w/out reefers)	Standard B (Telex, Fax, Telephone)
<b>On deck</b>	abt. 996TEU + 22 FEU (empty)	<b>Rudder</b>	One semi-balanced type	Tyfon
<b>Total</b>	abt. 1740TEU (incl. 144 units of 45')	<b>Steering gear</b>	One el-hyd. two ram, two cylinder type	
<b>Hatch covers</b>		<b>Lifting devices</b>		<b>Environmental conditions</b>
Hold No.1	One hatch abt. 12480x20132mm	<b>Crane</b>	2 sets el-hyd. type 45tx28m	Max ambient air temp= +35°C
Hold No. 2	Two hatches abt. 12800x25030mm	<b>Auxiliary crane</b>	1 set 6tx15m	Minimum ambient temp = -20°C
Hold No. 3	Two hatches abt. 12800x25030mm			
Hold No.4	Two hatches abt. 12800x25030mm	<b>Bow thruster</b>	900 kW x 1 set	
Hold No.5	One hatch abt. 12480x25030mm		E-motor driven CPP type	

### The vessel can carry the following IMDG cargoes in holds:

Holds No. 1,2 and 3,4 to be equipped to carry dangerous goods in closed containers of class: 2.1, 2.2, 2.3, 3.1, 3.2, 4.1, 4.2, 5.1, 6.1, 8,9

Hold No.1 and 2 also to be equipped to carry Class 1.1,1.2,1.4s and 1.6

**Reefer container loading situation:** The vessel to be equipped to carry on deck 220 reefer container and in holds No.3 and 4 each 40 reefer containers of 12.5Kw